

MERSEREAU PARK



Note: This proposal is provided undated for neighborhood and park user comment. You may address any thoughts to:

Frank Flint, Trustee
Mersereau Park Improvements
Village of Endicott
1009 East Main Street
Endicott, NY 13760

Subsequently, an open meeting to discuss final content of a formal proposal will be announced in January, 2012

Endicott CDBG Grants

2012 Improvements & Upgrades

00/00/00 (date)

Past and current uses of Mersereau Park:

(Mersereau Park is an Endicott Village park under the care and supervision of the village parks department)

- Endicott Boy's & Girl's Club athletic programs
- Organized youth sports including soccer, baseball, football, and lacrosse practices and games
- Semi-organized adult sports including softball and baseball practices
- Public schools track team practices
- Pick-up softball, baseball, touch football, soccer, lacrosse, basketball, frisbee, frisbee soccer, volleyball, kickball, boomeranging, kite flying, rockets, golf practice, jogging, walking
- Organized children's summer crafts
- Families with children at the play areas
- Pet exercising
- Group picnicking
- Community concerts
- Workers lunching; exercising; sunbathing; meeting; taking breaks
- Spectators at the youth games
- Jogging
- Cross-country skiing
- Natural-freeze ice-skating
- Snow sculpting

Known objections of Mersereau Park neighbors:

- Fencing
- Area lighting
- Activities after dark
- Driving and/or parking in the park
- Angle parking along the streets
- Loud music
- Unleashed or uncontrolled pets
- Unremoved trash & pet droppings
- Golfing practice

Mersereau Park as a possible support to neighborhood lifestyles and community plans:

- Neighborhood is relatively quiet with sidewalks and trouble-free pedestrian mobility.
- Few children in the immediate area, but visitors appreciate easy access and simplicity of park play areas.
- Adjacent streets have many residential apartments – well maintained with long-term leasing.
- Easy distance to Ideal Living Center, post office, pharmacies, stores and services of West Endicott.
- Many residents walk for exercise; many with dogs. Mersereau Park should be pedestrian and elder friendly.
- Borders on the Susquehanna River and the Chugnut Trail, as well as the bridge to Vestal and the Rail Trail.
- There has been clearing for a river walk on the river side of the Mersereau Park flood wall.
- Neighborhood is quiet and the park is attractive for laid-back, relaxing, and pensive visits.
- There is almost always an area for kites, rockets, boomerangs, and other space-requiring activities.
- Park is not crowded; play areas are not threatening or demanding of total parental participation.
- CDBG grant monies are available for restoration, improvements, and additions.
- Situated to participate in the Broome County Intermunicipal Waterfront Revitalization Project.
- Eligible for historical? other? funding

Indicated improvements and upgrades to Mersereau Park:

- Mersereau Park should be made pedestrian and elder friendly however possible.
- Any changes or additions to playground equipment should support the traditional demographic of toddlers and gradeschoolers in a passive and easy-care setting.
- Use of Mersereau Park by the Endicott Boys & Girls Club has been healthy and cooperative with usually amiable and tolerable additions to neighborhood traffic during limited seasons of the year. Any ways this cooperation can be enhanced is a plus for the village, the community, and our youth.
- After a time of using organized activities to “babysit” participants, more parents and relatives are coming as spectators again. This should be encouraged: perhaps with parking lots, more benches and picnic tables, and, at least, some trash receptacles. Walker and worker breaktimes would also be served.
- Mersereau Park should take advantage of community initiatives on use of the Susquehanna River.
- Mersereau Park should learn from the successes of local and nationwide development initiatives that improve the quality of life for residents through exercise, interaction, and recreation; at minimal expense.
(See Rail Trail Connector, Chugnut Trail, page 5, and chart on page 7.)

Mersereau Park as a possible link with emerging opportunities:

- An extended walking trail along the north shore of the Susquehanna has begun at the south boundary of Mersereau Park. It could link Endicott Boys' & Girls' Club, UE high school, Endwell, and Vestal to the east, and Round Top Park, Grippen Park, En-Joie Golf Club, Nanticoke Creek, and the Tri-Cities Airport sports complex to the west.
- The bridge over the Susquehanna River affords a connection to the Vestal Rail Trail, and a link to the Chugnut Trail under development along Mersereau Park's north shore embankment. Mersereau Park is a logical location for a "rest" stop and/or an entry to these river paths. A multi-purpose pavilion with parking and restroom facilities may be advantageous here. At the very least, river view benches with native shade trees and river flora should be encouraged.
- Opportunities for guided history and science field trips, fishing, boating, kayaking, biking, hockey, etc. at adjacent locations may suggest uses for Mersereau Park's future in cooperation with the Broome County Intermunicipal Waterfront Revitalization Project.

Low impact restoration, improvement, and upgrade possibilities for Mersereau Park:

- These are some of the means that other communities have used to spur use of their parks; offering outdoor exercise and interaction in a variety of ways to enhance quality of life for residents and appeal to potential residents, visitors, and employers. We have tried to consider their cost and appropriateness for Mersereau Park, its neighborhood, and the supporting businesses and resources.
- Any improvement should lead to more activities. A safe baseball field, for instance, may be used as a practice softball field, as a location for kickball leagues, or for reunion and pick-up games, as well as Boys & Girls Club scheduling. Plantings should anticipate outdoor classrooms of the future along Chugnut Trail. Etc.

	Baseball Backstops	Ball Field Upgrading	Native Trees & Flora Plantings	Basketball Court Restore	Restore Play Equipment Benches	Picnic Tables	Restrooms	Water Fountains	Trash Cans	Riverwalk Access	Parking Lots East/West Ends	Pavillion	Bandstand Dance Floor	Skating Rink	Restore Soccer Goals	Pickleball Court	Bocce Court	Horseshoe Pits	Volleyball Courts
Fits Mersereau Park	Y	Y	Y	Y	Y	Y	Y	Y	Y	Y	Y	Y	Y	Y	Y	Y	Y	Y	Y
Fits Park Neighbors	Y	Y	Y	Y	Y	Y	Y	Y	Y	Y	Y	Y	Y	Y	Y	Y	Y	Y	?
Fits Park Visitors	Y	Y	Y	Y	Y	Y	Y	Y	Y	Y	Y	Y	Y	Y	Y	Y	Y	Y	Y
Fits Village Goals	Y	Y	Y	Y	Y	Y	Y	Y	Y	Y	Y	Y	Y	Y	?	?	?	?	
Fits Town/County Goals	Y	Y	Y	Y	Y	Y	Y	Y	Y	Y	Y	Y	Y	?	?	?	?	?	
Fits GBSC Funding Criteria	Y	Y	Y	Y	Y	Y	Y	Y	Y	Y	Y	Y	Y	?	Y	Y	Y	Y	
Fits Waterfront Revitalization	Y	Y	Y	Y	Y	Y	Y	Y	Y	Y	Y	Y	Y	?	?	?	?	?	
Low Maintenance Costs	Y	?	?	Y	Y	?	?	N	?	?	?	N	N	N	Y	?	?	?	N
Fits Current Maintenance	Y	?	N	Y	Y	N	N	N	N	N	N	N	N	N	Y	N	N	N	N

DONE
 UNDERWAY
 UNDERWAY
 UNDERWAY
 BUDGETED

SINGLE FACILITY?

How CDBG monies were used in 2011:

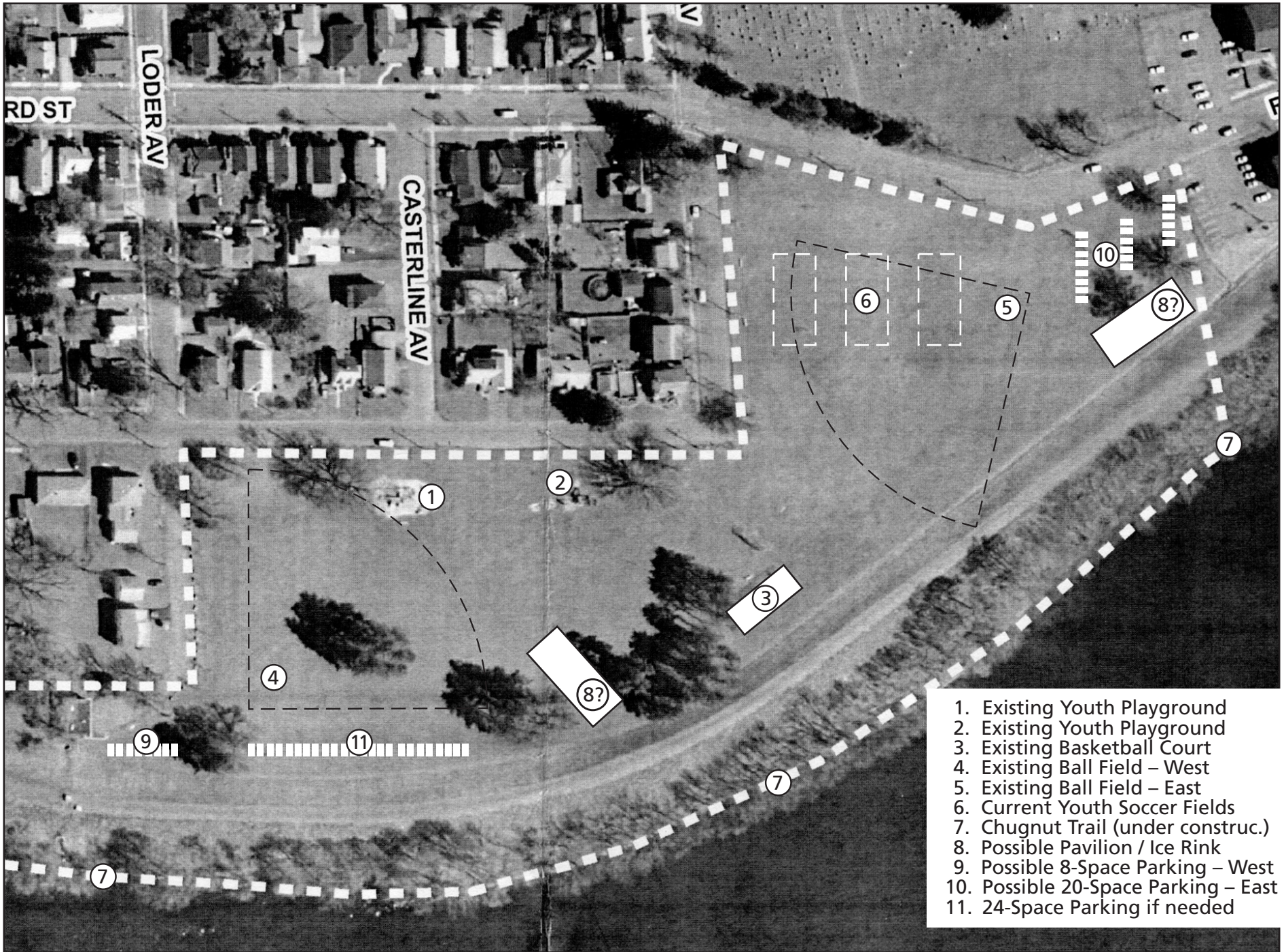
- Two deteriorating baseball backstops removed village services
- Two new baseball backstops relocated and installed \$13,000.00
- Remove trees from southwest ballfield playing area village services

How monies are to be used for 2012 improvements:

- Replant replacement trees in suitable sites \$2,500.00
- Level and restore park grounds to pre-flood condition \$1,500.00
- Restore playground areas as necessary \$1,500.00
- Grade and improve quality of both ballfields to safe condition \$14,000.00
- Restore basketball court to safe and suitable condition \$3,600.00
- Restore or remove water fountains \$600.00
- Restore and replace soccer goals as necessary \$1,000.00

Invite neighborhood and park users input for 2012 upgrades:

- Acquire additional park or spectator benches, trash receptacles, and picnic tables: \$4,000 - \$6,000
- Provide parking areas at the west and east ends of Mersereau Park: \$35,000 - \$40,000
- Provide a paved street hockey/badminton/pickleball court(s) that could be an ice rink in winter: \$2,500 - \$3,500
- Consider a multi-use pavilion; picnicking & community concerts in summer; ice rink in winter: \$120,000 - \$200,000
- Research potential for organized daylight activities catching on in other areas of the nation: Flag football, kickball, dodgeball, rugby, frisbee golf, pickleball, volleyball, box hockey, dog park, exercise course, senior playground, etc.
- Evaluate all considerations for low maintenance in the park, low impact on the neighborhood, and best potential for participation by residents and potential residents in the village
- If necessitated by plans, obtain appropriate archeological site study/approvals: \$5,000



1. Existing Youth Playground
2. Existing Youth Playground
3. Existing Basketball Court
4. Existing Ball Field - West
5. Existing Ball Field - East
6. Current Youth Soccer Fields
7. Chugnut Trail (under construc.)
8. Possible Pavilion / Ice Rink
9. Possible 8-Space Parking - West
10. Possible 20-Space Parking - East
11. 24-Space Parking if needed